

Description

CL01D is canister high accuracy digital load cell, designed for heavy-duty truck scales, rail scales, tank and silo weighing applications. Made with industry highest standards and with exceptional built-in surge arrestors, CL01D in combination with CI100D digital indicator is the ideal choice for applications which require harsh-environment, heavy-duty and high-accuracy.

Applications

Truck scales

Rail scale

Tank, hopper, silo weighing



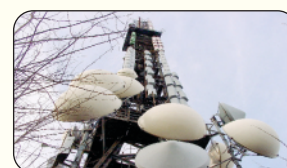
Lightning



Harsh Temperatures



Flood



Frequency Interference

Main Specifications

Load Cell Type	Column Compression, Digital Weight Processor
Capacity (ton)	30, 40, 50, 60
Accuracy	C4, OIML
Communication	RS485 Encrypted
Communication Rate	19200bps
Cable Length	16m
Cable Length, Home Run	≤ 200m
Warm-up Time from Cold Start	10 minutes
Temperature - Operating	-30°C - +70°C
Temperature - Compensated	-10°C - +40°C
Working Angle	Max ±3° from vertical
Minimum Dead Load	0 kg
Combined Error	< 250ppm R.C.
Protection	IP68 (1m - 7 days submersion), IP69K Externally Tested
Safe Load Limit	150%
Ultimate Load Limit	300%
Construction	Stainless Steel
Lightning Protection	Integral TVSS All Lines
Break down Voltage	≥ 500 VAC
Insulation Resistance	≥ 5000 MΩ @ 50VDC

