

CL02 series

LOAD CELL

CL02D SUPERIOR DIGITAL LOAD CELL



Lightning



Harsh Temperatures



Flood



Frequency Interference



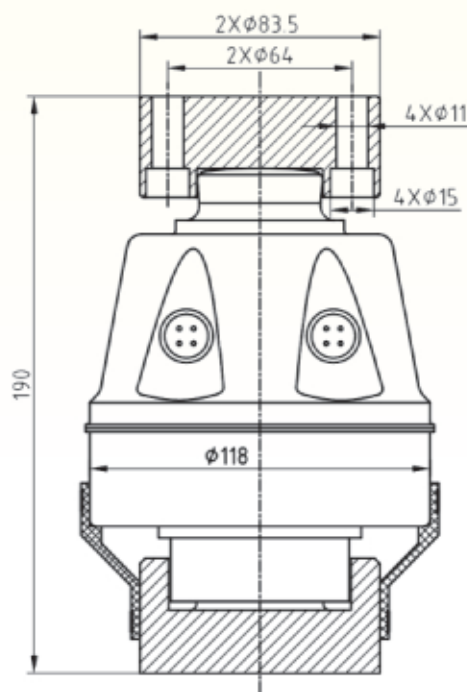
High-capacity, super-precision, exceptional lightning protection, simplified connection, ideal for extreme weighing environments

General Features

- Outstanding built-in lightning arrestor which can withstand surge of up to 80kA 8/20μs
- Aviation-grade waterproof connectors and military-grade double-shielded cable eliminates junction boxes - a common cause of scale failure
- Digital data improve speed, accuracy and distance
- IP69K guarantees no water ingress up to 100-bar pressure
- Custom high-quality material guarantees accuracy and durability
- More gauges guarantees stable accuracy under off-centre loads
- ISO9001 latest state-of-the-art manufacturing and testing facility
- Wide applications from truck and rail scales to bin, hopper and tank weighing
- Exceptional & true 3-year warranty including lightning strike

Main Specifications

Load Cell Type	Column Compression, Digital Weight Processor
Capacity (ton)	30, 40, 50, 60
Accuracy	C4, OIML
Communication	RS485 Encrypted
Communication Rate	19200bps
Connection type	Aviation-grade series connectors
Cable Length, Home Run	≤ 200m
Warm-up Time from Cold Start	10 minutes
Temperature - Operating	-30°C - +70°C
Temperature - Compensated	-10°C - +40°C
Temperature - Storage	-40°C - +80°C
Working Angle	Max ±3° from vertical
Minimum Dead Load	0 kg
Combined Error	< 250ppm R.C.
Effect of Cable Length on System Accuracy	0 kg (digital signal)
Zero Balance	< ±0.1% R.C.
Temperature Effect on Minimum Dead Load Output	< ±0.8 kg/°C * Vmin (OIML) / 5°C
Humidity Effect, Continuous 100% R.H.	0 kg (Hemertic Seal)
Nonrepeatability	< ±55 ppm R.C.
Supply Voltage Regulated in load cell	
+ Typical	7.5 to 15 VDC
+ Min / Max	7.5 to 20 VDC
Fatigue Life at R.C.	> 1,000,000 Cycles
Protection	IP68 (3m - 7 days submersion), IP69K Externally Tested
Safe Load Limit	200%
Ultimate Load Limit	300%
Construction	High Quality Stainless Steel
Lightning Protection	80kA 8/20µs
Break down Voltage	≥ 500 VAC
Insulation Resistance	≥ 5000 MΩ @ 50VDC



www.cencanscales.ca

WEIGHING SOLUTIONS FROM CENTRAL CANADA